



Caron Connections :: Issue #26 :: Printer friendly version



Send this issue of Caron Connections to a friend

Enter your friend's e-mail address:

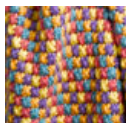
We will not share or keep this e-mail address.

[Share this issue of Caron Connections](#)



What's New
@ **CARON**

What's New @ naturally
caron.com



Summer is the perfect time to get busy stitching up something sweet for the little one in your life. Projects are small and portable and —when you knit or crochet with Simply Soft Quick, you'll finish so much faster. Try this delightful baby blanket to brighten up your summer stitching. Available in lots of yummy colors, softs or brights, for baby, Simply Soft Quick has the same sheen, softness and washability you expect from all our Simply Soft yarns.



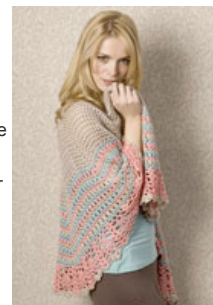
> [See all the Simply Soft Quick colors](#)

If you haven't already, there is still time you take a quick survey about Simply Soft yarn. So far, the results have been very interesting. For example, the majority of our helpful survey-takers consider themselves intermediate knitters or crocheters, although you beginner and experienced stitchers are well represented, too!

SIMPLY SOFT



When the weather warms up, the air conditioning seems to go up everywhere, too, making shawls and wraps wonderful accessories to get you through the season at the movies, at the supermarket, or in restaurants. If you are in the mood for a little shawl fun, you're in luck, since this week we have a delightful version in our bamboo blend NaturallyCaron.com Spa. Designed by premier crochet designer Doris Chan, Coco Bay, a three-color wrap will keep your interest and keep you warm when the thermostat goes up. Read about it on Cari's blog and—as a special treat, Doris has blogged about it, too!



> [Check out our online audio fashion show for Coco Bay](#)

> [Click to free instructions for Coco Bay](#)

> [View all colors for Spa](#)



If you're in more a light sweater mood, we've got you covered, too. Our Asheville Jacket is an easy, sophisticated piece that can be belted or unbelted to achieve different looks. And the pattern stitch border makes it special without too much effort. Of course, the special construction characteristics of the Country yarn it's knit with make that texture pop, too.

> [Check out our online audio fashion show for the Asheville Jacket](#)

> [Click to free instructions for the Asheville Jacket](#)

> [View all colors for Country](#)

Fashion Advisor



At NaturallyCaron.com, we want to give you a complete yarn experience, helping you find just the right yarn, color and pattern that flatters you. As our site develops, we'll be posting articles about best fit, silhouette for your body style and best tips for flattering drape, collars, hemlines and sleeves. Take a quick peek at what's live now in the Fashion Advisor.



Buy all your favorite Caron products online

|| [Yarns](#) || [Free Projects](#) || [Where to Buy](#) || [Links](#) || [Learning](#) || [Contact Us](#) || [Caron Connections](#) || [News](#) || [Latch Hook](#) ||

Visit Bond America online

©2007 Caron International