



**CARON**<sup>®</sup>  
soften your world

Subscribe to Caron Connections, our free e-newsletter.

Enter your e-mail address

subscribe

[yarn](#) [free projects](#) [where to buy](#) [links](#) [learning](#) [contact us](#) [caron connections](#) [news](#) [latch hook](#)

#### Caron Yarns

##### Simply Soft<sup>®</sup>

Simply Soft<sup>®</sup> Baby **NEW**

Simply Soft<sup>®</sup> Brites

Simply Soft<sup>®</sup> Heather

##### NEW

Simply Soft<sup>®</sup> Quick

Simply Soft<sup>®</sup> Tweed

Simply Soft<sup>®</sup> Shadows

##### Bliss

Craft & Rug Yarn **NEW**

Felt-It

Fling

Glimmer

Natura<sup>®</sup>

One Pound

Perfect Match<sup>®</sup>

Pizazz

Wintuk<sup>®</sup>

#### Caron Latch Hook Kits

Shaggy **NEW**

Caron<sup>®</sup> Classics

Natura<sup>®</sup>

WonderArt<sup>®</sup>

Krafty Kids<sup>®</sup>

Christmas designs



Buy all your favorite  
Caron products online

## Soften Your Mornings Afghan

with

**SIMPLY SOFT**  
*Brites*

designed by Marilyn Losee & Darlene Dale



[click to enlarge image](#)  
[schematics](#)

**TECHNIQUE USED:** Knit



**Printer Friendly PDF**

#### FINISHED MEASUREMENTS

Throw measures approximately 50"/127cm wide x 65" 165 cm long, excluding fringe; each Block measures approximately 10"/25.5 cm wide x 12"/30.5 cm long, including Garter st border between the Blocks

#### MATERIALS

Caron International's Simply Soft Brites (100% acrylic; 6 oz/170 g, 315 yds/288 m skein):

#9604 Watermelon (A), 2 skeins

#9605 Mango (B), 2 skeins

#9607 Limelight (C), 2 skeins

#9608 Blue Mint (D), 2 skeins

#9610 Grape (E), 3 skeins

One pair each size US 6, 8 and 9 (4, 5 and 5.5 mm), or size to obtain gauge

Cable needle (cn)

One circular needle size US 8 (5 mm), 24" or longer, for the borders

Yarn needle

#### OPTIONAL

Row counter

**GAUGE**

In Stockinette stitch, 18 sts x 24 rows = 4"/10cm, using medium (size 8) needles;

In Garter stitch, 4 1/2 sts = 1" and 4 rows = 1/2", using smallest (size 6) needles;

In Cable patterns, 17 sts x 20 rows = 4"/10cm, using largest (size 9) needles

**ABBREVIATIONS**

**C4B:** Slip 2 sts to cn, hold to back, k2, k2 from cn.

**C4F:** Slip 2 sts to cn, hold to front, k2, k2 from cn.

**C6B:** Slip 3 sts to cn, hold to back, k3, k3 from cn.

**STITCHES USED**

Garter stitch (Garter st)

Stockinette st (St st)

**Seed Stitch** (multiple of 2 sts + 1; 1 edge st each side)

**Row 1 (RS):** K1 (edge st), \* k1, p1; repeat from \* across to last 2 sts, end k1, k1(edge st).

**Row 2:** P1, \* k1, p1; repeat from \* across.

Repeat Rows 1 and 2 for Seed st.

**Trinity Stitch** (multiple of 4 sts; 2 edge sts each side)

**Row 1 (WS):** P2 (edge sts), \* [k1, p1, k1] in next st (2 sts increased), p3tog (2 sts decreased); repeat from \* across to last 2 sts, end p2 (edge sts).

**Row 2:** K2, purl across to last 2 sts, end k2.

**Row 3:** P2, \* p3tog, [k1, p1, k1] in the next st; repeat from \* across to last 2 sts, end p2.

**Row 4:** Repeat Row 2.

Repeat Rows 1 – 4 for Trinity st.

**Basket Stitch** (multiple of 6 sts + 4; 2 edge sts each side)

**Rows 1 and 7 (RS):** Knit.

**Rows 2 and 8:** Purl.

**Rows 3 and 5:** K2 (edge sts), \* k1, p4, k1; repeat from \* across to last 2 sts, end k2 (edge sts).

**Rows 4 and 6:** P2, \* p1, k4, p1; repeat from \* across to last 2 sts, end p2.

**Rows 9 and 11:** K2, \* p2, k2, p2; repeat from \* across to last 2 sts, end k2.

**Rows 10 and 12:** P2, \* k2, p2, k2; repeat from \* across to last 2 sts, end p2.

Repeat Rows 1 – 12 for Basket st.

**Feather Stitch** (multiple of 7 + 4; 2 edge sts each side)

**Row 1 (RS):** Knit.

**Row 2:** Purl.

**Row 3:** K2 (edge sts), \* p1, p2tog, yo, k1, yo, p2tog, p1; repeat from \* across to last 2 sts, end k2 (edge sts).

**Row 4:** Purl.

Repeat Rows 1 – 4 for Feather st.

**Shell Stitch** (multiple of 11 sts + 2; 1 edge st each side)

**Row 1:** Knit.

**Row 2:** Purl.

**Row 3:** K1 (edge st), \* [p2tog] twice, [yo, k1] 3 times, yo, [p2tog] twice; repeat from \* across to last st, end k1 (edge st).

**Row 4:** Purl.

Repeat Rows 1 – 4 for Shell st.

**Squares Stitch** (multiple of 5 sts + 1; 1 edge st each side)

**Rows 1, 3 and 5 (RS):** Knit.

**Rows 2 and 4:** P1 (edge st), p4, \* k1, p4; repeat from \* across to last st, end p1 (edge st).

**Row 6:** Knit.

Repeat Rows 1 – 6 for Squares st.

**6-Stitch Cable Pattern** (multiple of 9 sts + 5; 1 edge st each side).

**Rows 1, 3 and 5 (RS):** K1 (edge st), \* p3, k6; repeat from \* across to last 4 sts, end p3 and k1 (edge st).

**Row 2 and all WS rows:** Knit the knit sts and purl the purl sts as they face you.

**Row 7:** K1, \* p3, C6B; repeat from \* across to last 4 sts, end p3 and k1.

**Row 8:** Repeat Row 2.

Repeat Rows 1 – 8 for 6-Stitch Cable pattern.

**Oblique Stitch** (multiple of 9 sts + 1; 1 edge st each side)

**Note:** Eyelet pattern moves 1 st to the right every other row; new Eyelet pattern(s) begin to the left as sts become available and Eyelet pattern(s) to the right are discontinued when edge sts are reached (see Chart).

**Row 1 (RS):** K1 (edge st), \* k4, yo, [sl 1, k2tog, pssso], yo, k2; repeat from \* across; last st of last repeat = edge st.

**Row 2 and all WS rows:** Purl.

**Row 3:** K1, \* k3, yo, [sl 1, k2tog, pssso], yo, k3; repeat from \* across.

**Row 5:** K1, \* k2, yo, [sl 1, k2tog, pssso], yo, k4; repeat from \* across.

**Row 7:** K1, \* k1, yo, [sl 1, k2tog, pssso], yo, k5; repeat from \* across.

**Row 9:** K1, \* yo, [sl 1, k2tog, pssso], yo, k6; repeat from \* across.

**Row 11:** K9, \* yo, [sl 1, k2tog, pssso], yo, k6; repeat from \* across to last st, end k1.

**Row 13:** K8, \* yo, [sl 1, k2tog, pssso], yo, k6; repeat from \* across to last 2 sts, end k2.

**Row 15:** K7, \* yo, [sl 1, k2tog, pssso], yo, k6; repeat from \* across to last 3 sts, end k3.

**Row 17:** K1, \* k5, yo, [sl 1, k2tog, pssso], yo, k1; repeat from \* across.

**Row 18:** Repeat Row 2.

Repeat Rows 1 – 18 for Oblique st.

**Ridge/Diamond Stitch** (multiple of 8 sts + 7)

**Rows 1 and 9:** P7, \* k1, p7; rep from \* across.

**Row 2 and 8:** K3, p1, k2, \* p3, k2, p1, k2; repeat from \* across to last st, end k1.

**Rows 3 and 7:** P1, \* p1, k3, p2, k1, p1; repeat from \* across to last 6 sts, end p1, k3, p2.

**Rows 4 and 6:** K1, p5, \* k3, p5; repeat from \* across to last st, end k1.

**Row 5:** K7, \* p1, k7; repeat from \* across.

**Rows 10, 11 and 12:** Purl.

Repeat Rows 1 – 12 for Ridge/Diamond st.

**Horseshoe CablePattern** (multiple of 13 sts + 7; 1 edge st each side)

**Rows 1 and 3 (RS):** K1 (edge st), \* p5, k8; repeat from \* across to last 6 sts, end p5, k1 (edge st).

**Row 2 and all WS rows:** Knit the knit sts and purl the purl sts as they face you.

**Row 5:** K1, \* p5, C4F, C4B; repeat from \* across to last 6 sts, end p5, k1.

**Row 6:** Repeat Row 2.

Repeat Rows 1 – 6 for Horseshoe Cable pattern.

**Alternate Eyelet Stitch** (multiple of 6 sts + 5; 1 edge st each side)

**Rows 1 and 5 (RS):** Knit.

**Rows 2 and 4:** P1 (edge st), p3, \*k3, p3; repeat from \* across to last st, end p1 (edge st).

**Row 3:** K1, \* k3, p1, yo, p2tog; repeat from \* across to last 4 sts, end k4.

**Row 6:** P1, k3, \* p3, k3; repeat from \* across to last st, end p1.

**Row 7:** K1, \* p1, yo, p2tog, k3; repeat from \* across, ending last repeat k1 (edge st), instead of k3.

**Row 8:** Repeat Row 6.

Repeat Rows 1 – 8 for Alternate Eyelet st.

**Mock TurkishStitch** (multiple of 2 sts; 1 edge st each side)

**Row 1:** K1 (edge st), \* yo, k2tog; repeat from \* across to last st, end k1 (edge st).

Repeat Row 1 for Mock Turkish st.

**Double Moss Stitch** (multiple of 4 sts; 2 edge sts each side)

**Row 1:** K2 (edge sts), \* k2, p2; repeat from \* across to last 2 sts, end k2 (edge sts),.

**Row 2:** P2, \* k2, p2; repeat from \* across to last 2 sts, end p2.

**Row 3:** K2, \* p2, k2; repeat from \* across to last 2 sts, end k2.

**Row 4:** P2, \* p2, k2; repeat from \* across to last 2 sts, end p2.

Repeat Rows 1 – 4 for Double Moss st.

**Campanula Stitch** (multiple of 5 sts + 2; 1 edge st each side)

**Row 1 (RS):** K1 (edge st), \* k3, p2; repeat from \* across to last st, end k1 (edge st).

**Rows 2 and 4:** P1, \* k2, p3; repeat from \* across to last 2 sts, end p2.

**Row 3:** Repeat Row 1.

**Row 5:** K1, \* yo, [sl 1, k2tog, pss0], yo, p2; repeat from \* across to last st, end k1.

Repeat Rows 2 – 5 for Campanula st.

**Bamboo Stitch** (multiple of 2 sts; 2 edge sts each side)

**Row 1 (RS):** Knit.

**Row 2:** Purl.

**Row 3:** K2 (edge sts), \* yo, k2, pass the yo over the 2 knit sts; repeat from \* across to last 2 sts, end k2 (edge sts).

**Row 4:** Purl.

Repeat Rows 3 and 4 for Bamboo st.

#### NOTES

Throw is worked in 5 Strips, with 5 different Stitch patterns per Strip (see diagram and text).

Gauge may vary slightly with the various Stitch patterns used for the Throw. Gauge is not critical for the overall piece, but it is important to maintain a consistent width on each Strip.

Stitch counts vary in individual Stitch patterns to help maintain a consistent width for each Strip.

Each block in each Strip is separated by 4 rows of Garter stitch; Garter st is worked with smallest (size 6) needles to maintain consistent width.

Cable Blocks (7, 10, 16 and 19) are worked using largest (size 9) needles to maintain consistent width; all other Blocks are worked with medium (size 8) needles.

Most Blocks have edge sts worked in St st throughout to make seaming easier (see Charts and text).

Borders are worked *back and forth* in rows; circular needle is used to accommodate large number of sts.

#### THROW

##### First Strip – Blocks 1 – 5

###### Block 1 (45 sts)

Using medium needles and C, cast on 45 sts.

**(WS)** Purl one row.

**(RS)** Begin Seed st; work even until piece measures 11 1/2" from beginning, end with a WS row.

**(RS)** Change to smallest needles and Garter st; work 4 rows, increasing 3 sts evenly across last row—48 sts.

###### Block 2 (48 sts)

Change to medium needles and E.

**(RS)** Purl one row.

**(WS)** Begin Trinity st; work even until piece measures 11 1/2" from beginning, end with a WS row.

**(RS)** Change to smallest needles and Garter st; work 4 rows, decreasing 2 sts evenly across last row—46 sts remain.

###### Block 3 (46 sts)

Change to medium needles and B.

**(RS)** Begin Basket st; work even until piece measures 11 1/2" from beginning, end with a WS row.

**(RS)** Change to smallest needles and Garter st; work even for 4 rows.

###### Block 4 (46 sts)

Change to medium needles and D.

**(RS)** Begin Feather st; work even until piece measures 11 1/2" from beginning, end with a WS row.

**(RS)** Change to smallest needles and Garter st; work even for 4 rows.

**Block 5** (46 sts)

Change to medium needles and A.

**(RS)** Begin Shell st; work even until piece measures 12" from beginning, end with a WS row.

Bind off all sts – First Strip completed.

**Second Strip – Blocks 6 – 10****Block 6** (46 sts)

Using medium needles and A, cast on 46 sts.

**(RS)** Begin Squares st; work even until piece measures 11 1/2" from beginning, end with a WS row.

**(RS)** Change to smallest needles and Garter st; work 4 rows, increasing 4 sts evenly across last row—50 sts.

**Block 7** (50 sts)

Change to *largest* needles and C.

**(RS)** Begin 6-Stitch Cable pattern; work even until piece measures 11 1/2" from beginning, end with a WS row.

**(RS)** Change to smallest needles and Garter st; work 4 rows, decreasing 4 sts evenly across last row—46 sts remain.

**Block 8** (46 sts)

Change to medium needles and E.

**(RS)** Begin Oblique st; work even until piece measures 11 1/2" from beginning, end with a WS row.

**(RS)** Change to smallest needles and Garter st; work 4 rows, increasing 1 st across last row—47 sts.

**Block 9** (47 sts)

Change to medium needles and B.

**(RS)** Begin Ridge/Diamond st; work even until piece measures 11 1/2" from beginning, end with a WS row.

**(RS)** Change to smallest needles and Garter st; work 4 rows, decreasing 1 st across last row—46 sts remain.

**Block 10** (46 sts)

Change to *largest* needles and D.

**(RS)** Begin Horseshoe Cable pattern; work even until piece measures 12" from beginning, end with a WS row.

Bind off all sts – Second Strip completed.

**Third Strip – Blocks 11 - 15****Block 11** (47 sts)

Using medium needles and D, cast on 47 sts.

**(RS)** Begin Alternate Eyelet st; work even until piece measures 11 1/2" from beginning, end with a WS row.

**(RS)** Change to smallest needles and Garter st; work 4 rows, decreasing 1 st across last row—46 sts.

**Block 12** (46 sts)

Change to medium needles and A.

**(RS)** Begin Mock Turkish st; work even until piece measures 11 1/2" from beginning, end with a WS row.

**(RS)** Change to smallest needles and Garter st; work 4 rows, decreasing 2 sts evenly across last row—44 sts remain.

**Block 13** (44 sts)

Change to medium needles and C.

**(RS)** Begin Double Moss st; work even until piece measures 11 1/2" from beginning, end with a WS row.

**(RS)** Change to smallest needles and Garter st; work 4 rows, increasing 3 sts evenly across last row—47 sts.

**Block 14** (47 sts)

Change to medium needles and E.

**(RS)** Begin Campanula st; work even until piece measures 11 1/2" from beginning, end with a WS row.

**(RS)** Change to smallest needles and Garter st; work 4 rows, decreasing 1 st across last row—46 sts remain.

**Block 15** (46 sts)

Change to medium needles and B.

**(RS)** Begin Bamboo st; work even until piece measures 12" from beginning, end with a WS row.

Bind off all sts – Third Strip completed.

**Fourth Strip – Blocks 16 – 20**

**Block 16** (50 sts)

Using *largest* needles and B, cast on 50 sts.

**(RS)** Begin 6-st Cable pattern; work even until piece measures 11 1/2" from beginning, end with a WS row.

**(RS)** Change to smallest needles and Garter st; work 4 rows, decreasing 4 sts evenly across last row—46 sts remain.

**Block 17** (46 sts).

Change to medium needles and D.

**(RS)** Begin Oblique st; work even until piece measures 11 1/2" from beginning, end with a WS row.

**(RS)** Change to smallest needles and Garter st; work 4 rows, increasing 1 st across last row—47 sts.

**Block 18** (47 sts)

Change to medium needles and A.

**(RS)** Begin Ridge/Diamond st; work even until piece measures 11 1/2" from beginning, end with a WS row.

**(RS)** Change to smallest needles and Garter st; work 4 rows, decreasing 1 st across last row—46 sts remain.

**Block 19** (46 sts)

Change to *largest* needles and C.

**(RS)** Begin Horseshoe Cable pattern; work even until piece measures 11 1/2" from beginning, end with a WS row.

**(RS)** Change to smallest needles and Garter st; work even for 4 rows.

**Block 20** (46 sts)

Change to medium needles and E.

**(RS)** Begin Squares st; work even until piece measures 12" from beginning, end with a WS row.

Bind off all sts – Fourth Strip completed.

**Fifth Strip – Blocks 21 – 25****Block 21** (46 sts)

Using medium needles and E, cast on 46 sts.

**(RS)** Begin Feather st; work even until piece measures 11 1/2" from beginning, end with a WS row.

**(RS)** Change to smallest needles and Garter st; work 4 rows, decreasing 1 st across last row—45 sts remain.

**Block 22** (45 sts)

Change to medium needles and B.

**(RS)** Begin Seed st; work even until piece measures 11 1/2" from beginning, end with a WS row.

**(RS)** Change to smallest needles and Garter st; work 4 rows, increasing 1 st across last row—46 sts.

**Block 23** (46 sts)

Change to medium needles and D.

**(RS)** Begin Shell st; work even until piece measures 11 1/2" from beginning, end with a WS row.

**(RS)** Change to smallest needles and Garter st; work even for 4 rows.

**Block 24** (46 sts)

Change to medium needles and A.

**(RS)** Begin Basket st; work even until piece measures 11 1/2" from beginning, end with a WS row.

**(RS)** Change to smallest needles and Garter st; work 4 rows, increasing 2 sts evenly across last row—48 sts.

**Block 25** (48 sts)

Change to medium needles and C.

**(RS)** Begin Trinity st; work even until piece measures 12" from beginning, end with a WS row.

Bind off all sts – Fifth Strip completed.

**FINISHING:**

Block Strips lightly to measurements, if necessary. Sew strips together as shown on Diagram.

**Side Borders**

With RS facing, using circular needle and E, beginning at upper corner of Strip 1, pick up and knit 260 sts (52 sts along the side of each Block) down side edge of Strip 1 to lower corner.

Begin Double Moss st; work even for 6 rows.

Bind off all sts loosely in pattern.

Repeat for side edge of Strip 5.

Using yarn needle, weave in ends.

**Fringe**

Using E, cut strands 16" long. Holding 2 strands together, fold fringe in half. Using crochet hook, \* insert hook from WS to RS into first st at one lower corner, pull through loop, insert ends into loop and pull tight against edge; repeat from \*, working into (every other stitch) along both ends.

COLOR BLOCK DIAGRAM



KEY

Color Block Diagram

- Watermelon (A)
- Mango (B)
- Limelight (C)
- Blue Mint (D)
- Grape (E)

Numbers = Block numbers; see text and Charts.

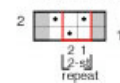
KEY

Stitch pattern Charts

- Knit on RS, purl on WS
- Purl on RS, knit on WS
- Yo
- K2tog
- Edge st(s)
- (RS) P2tog; (WS) k2tog
- Sk2p: Slip 1, k2tog, PSSO
- [K1, p1, k1] in next st (3 sts made in 1 st)
- (WS) P3tog (1 st made from 3)
- Yarn over, k2, pass yo over 2 knit sts.
- C4F: Sl 2 sts to cn, hold to front, k2, k2 from cn.
- C4B: Sl 2 sts to cn, hold to back, k2, k2 from cn.
- C6B: Sl 3 sts to cn, hold to back, k3, k3 from cn.
- Stitch pattern repeat

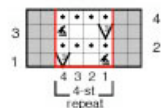
Seed Stitch

Block 1 and 22



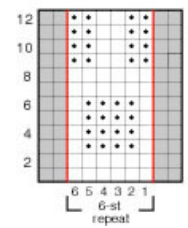
Trinity Stitch

Block 2 and 25



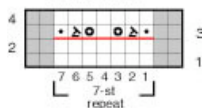
Basket Stitch

Block 3 and 24



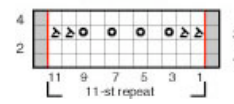
Feather Stitch

Block 4 and 21



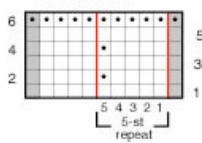
Shell Stitch

Block 5 and 23



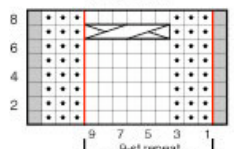
Squares Stitch

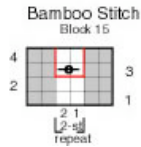
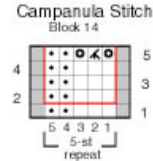
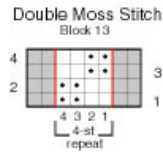
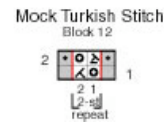
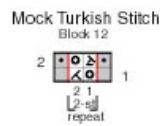
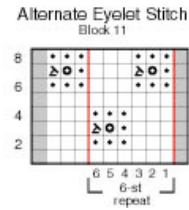
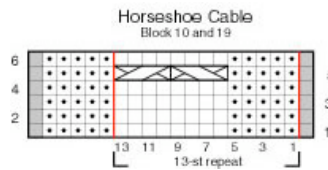
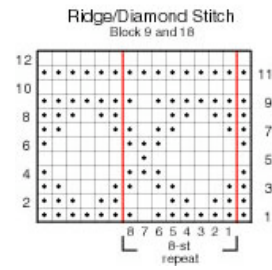
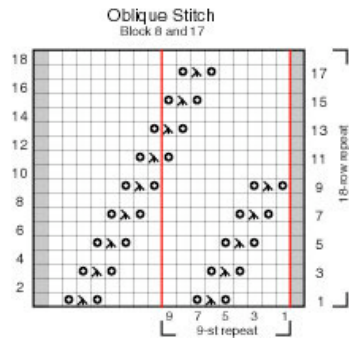
Block 6 and 20



6-Stitch Cable

Block 7 and 16





|| Yarns || Free Projects || Where to Buy || Links || Learning || Contact Us || Caron Connections || News ||  
Latch Hook ||

Visit Bond America online

©2007 Caron International